

1) The title *şükûfezâr* means 'garden in bloom; blossom-laden'.

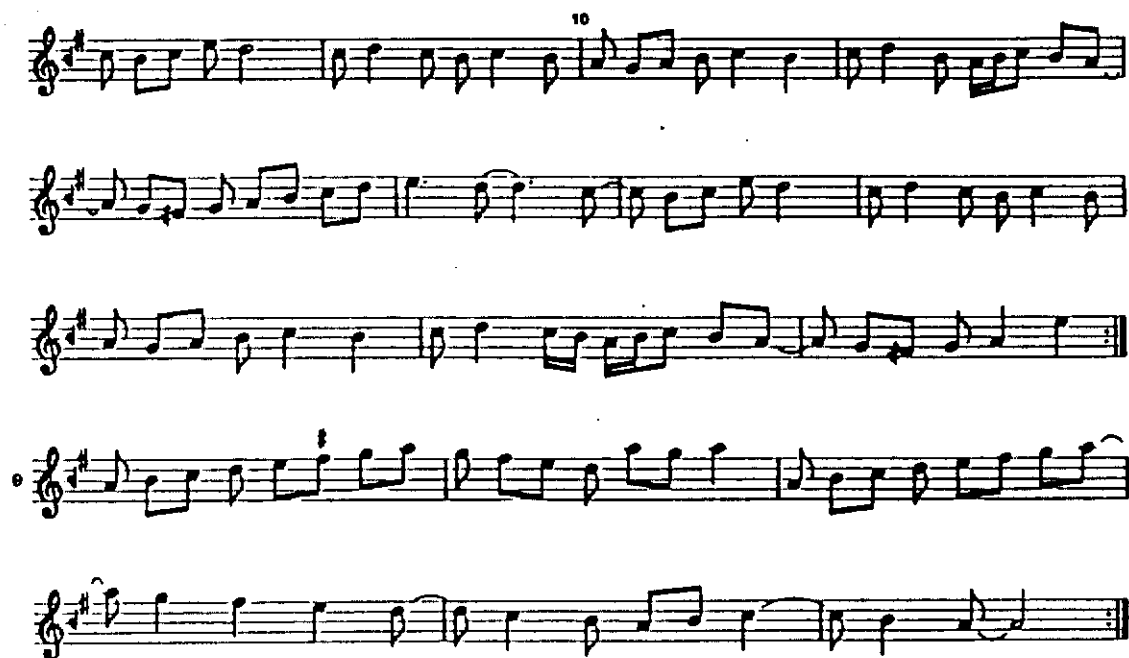
2) 'Ali Ufki 27v/54. 1 = ♩. The composer is not named.

H1 a 7: 7-8 A, 8: 1-3 F# G F#.

H1 b 1: 1-6 A, 2: 6, 8 e, 4: 5, 7 a, 5: 1, 3 g, 6: 2 e, 8: 1 e, 8 A, 9: 2 A, 7-8 G.

Ma 1: 2-3 d, 7-8 a g, 2: 1-2 g f#, 4: 5-6 e f# ga.

Mb 1: 2-3 d, 7-8 a g, 2: 1-2 g f#, 3: 1-2 d, 7-8 a g, 4: 1-2 g f#, 5: 1-2 d c (♩), 7-8 g f#, 6: 1-2 f# g, 4 d, 7: 1 A, 8: 1 Bdc.

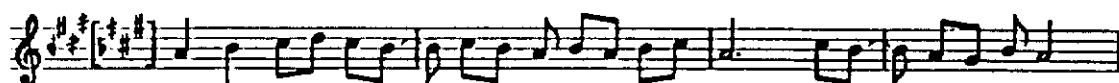
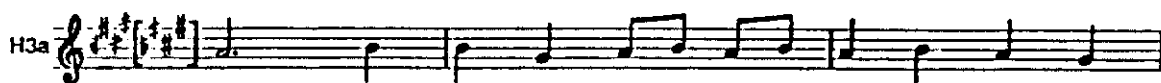
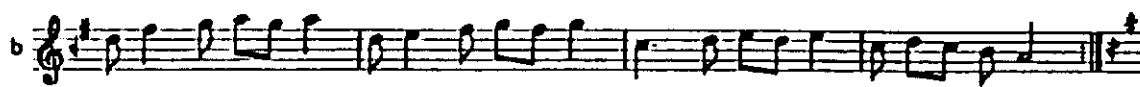
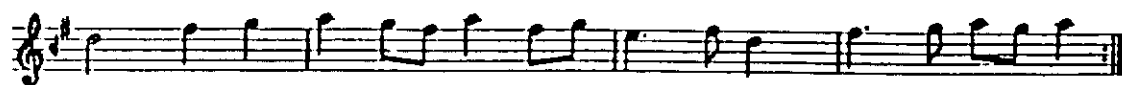


2) M c 1: 2 B♭, 2: 6 G, 5: 4-5 e d.

M d 1: 4 e, 2: 6 d, 8 e, 3: 4 d, 4: 6 d, 5: 4 c B♭, 5 B♭, 7-8 c B♭, 7-18:



M e 6: 1 d c.





1) H3 b is separated from H3 a not by *ve leh* but by *ma'ah*. The implication that a and b form a composite subsection is confirmed by the 'Alī Ufkī version, where the repeat pattern is not aa+bb but ab+ab.

2) H2 a 1: 2 B♭, 3: 5 e, 7 f♯, 6: 7-8 g f♯.

H2 b 3: 1 B♭.

H3 a 2: 6,8 A, 4: 5,7 d, 5: 1,3 c♯, 7: 3-4 A G♯.

H3 b 3: 2,4 B♭, 4: 5,7 d, 5: 1,3 c♯.

There is no H3 c.

3) Sanāl 222-4. 1 = ♩. Suggested tempo ♩ = 240.